

COMMERCIAL / RETAIL LOTS FOR SALE

WILD POINTE RANCH MARKETPLACE

STATE HIGHWAY 86, ELIZABETH, COLORADO 80107



TREVEY
COMMERCIAL
REAL ESTATE



PROPERTY FEATURES

- Join National Tenants Walmart, McDonald's, Taco Bell, Anytime Fitness, Murphy USA, Brakes Plus & Ziggis Coffee
- Lots Delivered Shovel Ready / Adjacent Utilities
- Suitable for Fast Food / Bank / Medical / Restaurant / Retail / Automotive Service / Self-storage
- Regional Shopping & Commuter Services Location
- Adjacent to New Gold Creek Valley Subdivision & Planned Legacy Village and Elizabeth West Communities

PROPERTY DETAILS

LOT INFORMATION	1.2 - 6.399 Acres m/l
PRICE	\$12.00 - \$18.00 P.S.F.
WATER	Elizabeth & HWY 86 Commercial Metro District
SANITATION	Town of Elizabeth
CITY / COUNTY	Elizabeth / Elbert
ZONING	P.D. Commercial / Retail
POTENTIAL RESTRICTIONS	Similar Use to Current Tenants - Contact Broker

TREVEY COMMERCIAL

10510 Dransfeldt Rd, Suite 100
Parker, Colorado 80134
303-841-1400 | www.trevey.com

NICK BEACH

nbeach@trevey.com
C: 719-237-0880
O: 303-841-1400

MITCH TREVEY

mitch@trevey.com
C: 303-619-7192
O: 303-841-1400

COMMERCIAL / RETAIL LOTS FOR SALE

WILD POINTE RANCH MARKETPLACE, ELIZABETH, CO



LOT DETAILS

LOT	AC	SF
3	1.2323	53,678
4	1.3963	60,822
5	1.2607	54,918
6	1.4053	61,217
7	1.6184	70,498
8	6.399	278,739

HWY 86

CIRCLE



Walmart 

Auto Zone

TACO BELL

Ziggis COFFEE

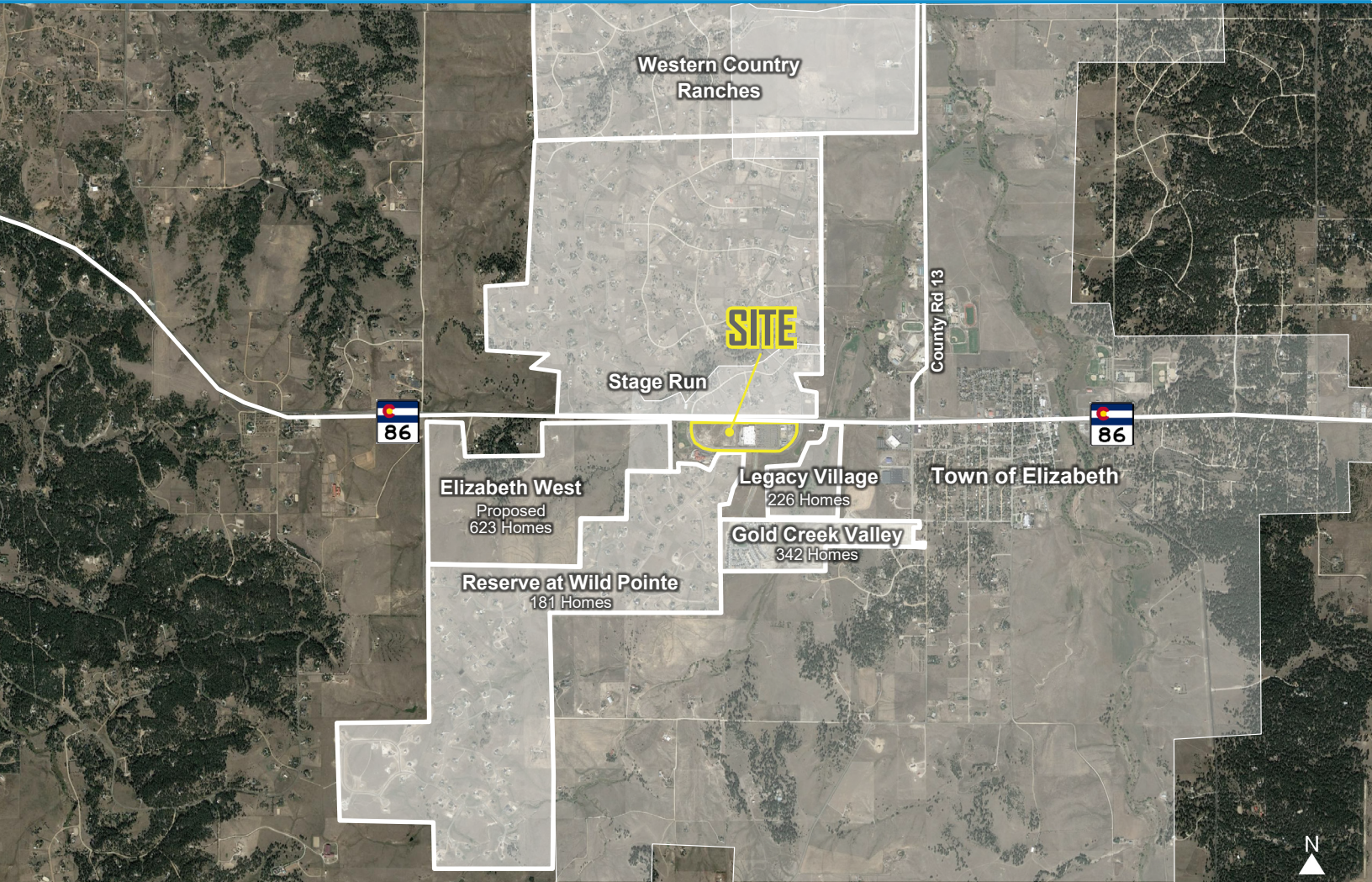
ANNA'S
CAR WASH DOG WASH

ANYTIME FITNESS

MURPHY USA

S & PRICING

<i>P.S.F.</i>	<i>PRICE</i>
\$18.00	\$966,204
\$14.00	\$851,508
\$16.00	\$878,688
\$15.00	\$918,255
\$14.00	\$986,972
\$12.00	\$3,344,868



TREVEY COMMERCIAL
 10510 Dransfeldt Rd, Suite 100
 Parker, Colorado 80134
 303-841-1400 | www.trevey.com

NICK BEACH
nbeach@trevey.com
 C: 719-237-0880
 O: 303-841-1400

MITCH TREVEY
mitch@trevey.com
 C: 303-619-7192
 O: 303-841-1400

DOWNLOAD BROKERAGE DISCLOSURE

Information contained herein, while not guaranteed, is from sources believed reliable. Price, terms and information subject to change. Please call to confirm current property status and accuracy of information contained herein.