

COMMERCIAL / RETAIL LOTS FOR SALE

WILD POINTE RANCH MARKETPLACE

STATE HIGHWAY 86, ELIZABETH, COLORADO 80107



TREVEY
COMMERCIAL
REAL ESTATE



PROPERTY DETAILS

LOT INFORMATION	1.2 - 5.0 Acres m/l
PRICE	\$12.00 - \$18.00 P.S.F.
WATER	Elizabeth & HWY 86 Commercial Metro District
SANITATION	Town of Elizabeth
CITY / COUNTY	Elizabeth / Elbert
ZONING	P.D. Commercial / Retail

PROPERTY FEATURES

- Prime Commercial / Retail Lots Available For Sale
- Excellent Daycare Site Adjacent to Legacy Academy Enrolling 415+ Students
- Lots Delivered Build Ready / Public Improvements Complete
- Join National Tenants Walmart, McDonald's, Taco Bell, Anytime Fitness, Murphy USA, Brakes Plus & Ziggie's Coffee
- Suitable for Fast Food / Bank / Medical / Restaurant / Retail / Automotive Service & Daycare
- Regional Shopping & Commuter Services Location
- Adjacent to New Gold Creek Valley Subdivision & Legacy Village Community
- For More Information Follow this Link:
[**Comprehensive Overview: Growth in Elbert County**](#)

TREVEY COMMERCIAL
10510 Dransfeldt Rd, Suite 100
Parker, Colorado 80134
303-841-1400 | www.trevey.com

NICK BEACH
V.P. Sales & Leasing
nbeach@trevey.com
C: 719-237-0880

MITCH TREVEY
Managing Director
mitch@trevey.com
C: 303-619-7192

COMMERCIAL / RETAIL LOTS FOR SALE

WILD POINTE RANCH MARKETPLACE, ELIZABETH, CO

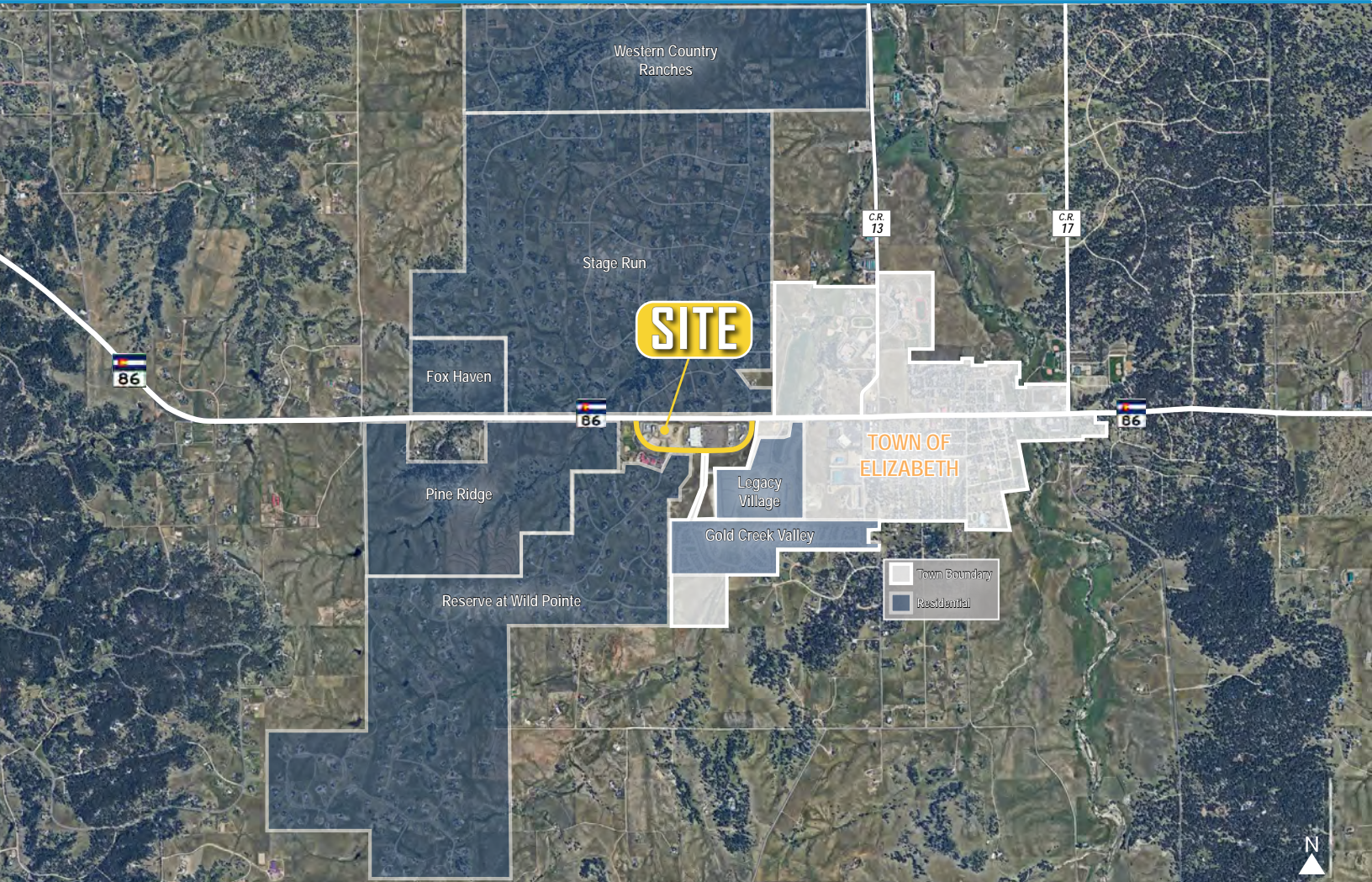


AVAILABLE LOTS

LOT	AC	SF
3	1.2323	53,678
4	1.3963	60,822
5	1.2607	54,918
6	1.4053	61,217
7	1.6184	70,498
8	5.0000	217,800
8-A	1.4000	60,984



P.S.F.	PRICE
\$18.00	\$966,204
\$14.00	\$851,508
\$16.00	\$878,688
\$15.00	\$918,255
\$14.00	\$986,972
\$12.00	\$2,613,600
\$18.00	\$1,097,712



TREVEY COMMERCIAL
 10510 Dransfeldt Rd, Suite 100
 Parker, Colorado 80134
 303-841-1400 | www.trevey.com

NICK BEACH
 V.P. Sales & Leasing
nbeach@trevey.com
 C: 719-237-0880

MITCH TREVEY
 Managing Director
mitch@trevey.com
 C: 303-619-7192

[CLICK HERE TO DOWNLOAD CREC BROKERAGE DISCLOSURE](#)

Information contained herein, while not guaranteed, is from sources believed reliable. Price, terms and information subject to change. Please call to confirm current property status and accuracy of information contained herein.