

COMMERCIAL / RETAIL LOTS FOR SALE

WILD POINTE RANCH MARKETPLACE

STATE HIGHWAY 86, ELIZABETH, COLORADO 80107



TREVEY
COMMERCIAL
REAL ESTATE



PROPERTY FEATURES

- Prime Commercial / Retail Lots Available For Sale
- Superior Access & Visibility Along Highway 86
- Lots Delivered Shovel Ready / Adjacent Utilities
- Join National Tenants Walmart, McDonald's, Taco Bell, Anytime Fitness, Murphy USA, Brakes Plus & Ziggis Coffee
- Suitable for Fast Food / Bank / Medical / Restaurant / Retail / Automotive Service & Self-storage
- Regional Shopping & Commuter Services Location
- Adjacent to New Gold Creek Valley Subdivision & Planned Legacy Village Community
- For More Information Follow this Link:
[Comprehensive Overview: Growth in Elbert County](#)

PROPERTY DETAILS

LOT INFORMATION	1.2 - 6.399 Acres m/l
PRICE	\$12.00 - \$18.00 P.S.F.
WATER	Elizabeth & HWY 86 Commercial Metro District
SANITATION	Town of Elizabeth
CITY / COUNTY	Elizabeth / Elbert
ZONING	P.D. Commercial / Retail
POTENTIAL RESTRICTIONS	Similar Use to Current Tenants - Contact Broker

TREVEY COMMERCIAL
10510 Dransfeldt Rd, Suite 100
Parker, Colorado 80134
303-841-1400 | www.trevey.com

NICK BEACH
V.P. Sales & Leasing
nbeach@trevey.com
C: 719-237-0880

MITCH TREVEY
Managing Director
mitch@trevey.com
C: 303-619-7192

COMMERCIAL / RETAIL LOTS FOR SALE

WILD POINTE RANCH MARKETPLACE, ELIZABETH, CO



STATE HIGHWAY 103

LEGACY PARKWAY

LEGACY ACADEMY
CHARTER SCHOOL

LOT DETAILS & PRICING

LOT	AC	SF
3	1.2323	53,678
4	1.3963	60,822
5	1.2607	54,918
6	1.4053	61,217
7	1.6184	70,498
8	6.399	278,739

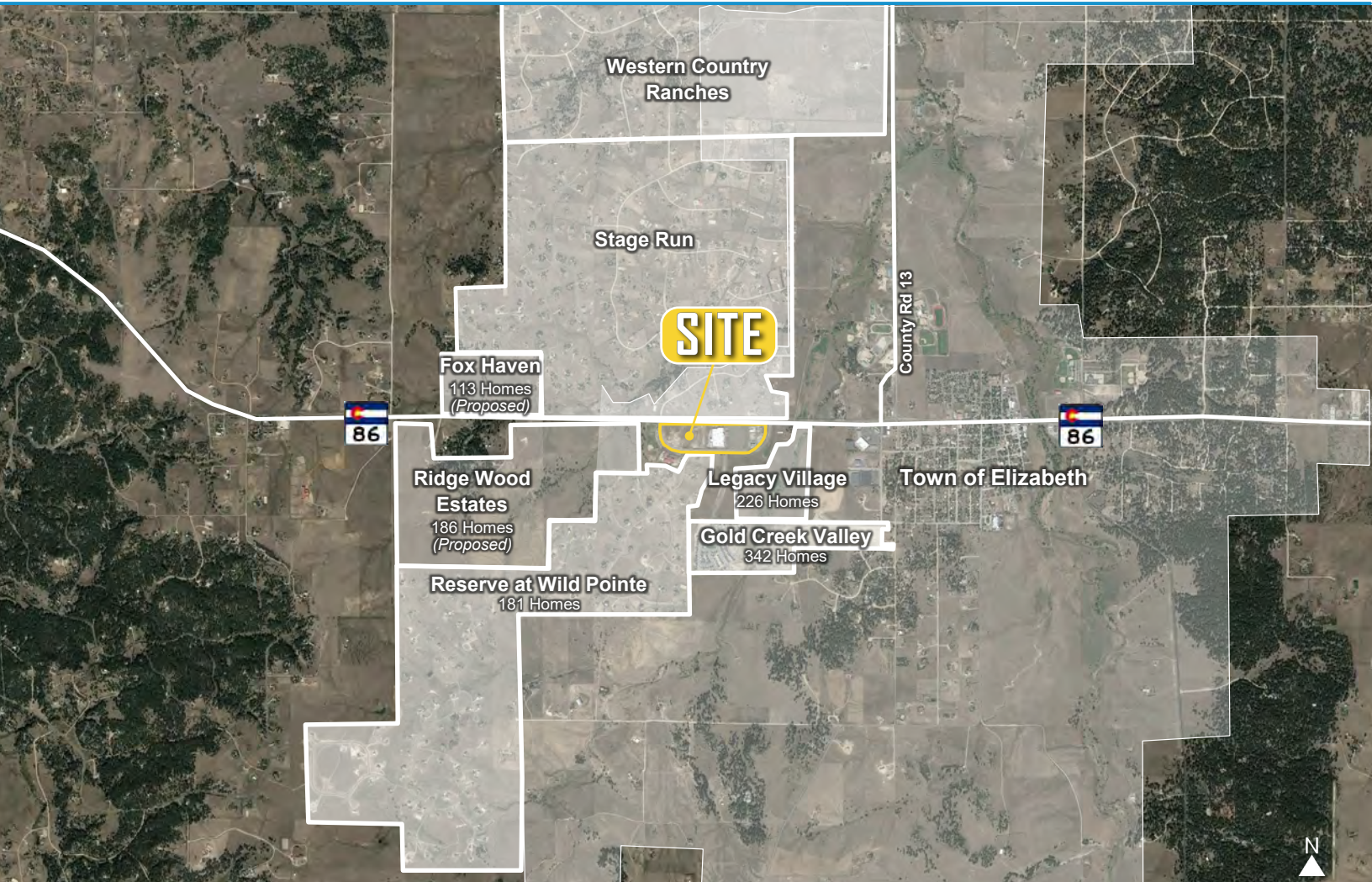
GHWAY 86



Walmart 

CIRCLE

<i>P.S.F.</i>	<i>PRICE</i>
\$18.00	\$966,204
\$14.00	\$851,508
\$16.00	\$878,688
\$15.00	\$918,255
\$14.00	\$986,972
\$12.00	\$3,344,868



TREVEY COMMERCIAL
 10510 Dransfeldt Rd, Suite 100
 Parker, Colorado 80134
 303-841-1400 | www.trevey.com

NICK BEACH
 V.P. Sales & Leasing
nbeach@trevey.com
 C: 719-237-0880

MITCH TREVEY
 Managing Director
mitch@trevey.com
 C: 303-619-7192

[CLICK HERE TO DOWNLOAD CREC BROKERAGE DISCLOSURE](#)

Information contained herein, while not guaranteed, is from sources believed reliable. Price, terms and information subject to change. Please call to confirm current property status and accuracy of information contained herein.