

COMMERCIAL / MIXED-USE LOT FOR SALE

VALLEY HI MIXED-USE

PARKER RD. & VALLEY HI DR., PARKER, CO 80134



TREVEY
COMMERCIAL
REAL ESTATE



PROPERTY FEATURES

- Mixed-Use Development Opportunity
- Located North of E-470
- Over 500' of Frontage Along Parker Rd.
- Adjacent to King Soopers & One (1) Block from Costco-Anchored Center
- Excellent Location for a Wide Variety of Commercial / Mixed-Use Applications

PROPERTY DETAILS

LAND SIZE	±9.617 Acres m/l
PRICE	\$2,500,000.00 (\$5.97 / SF)
ZONING	Commercial (Parker Master Plan Supports Mixed-Use Residential)
WATER / SAN	Parker Water & Sanitation
GAS / ELECTRIC	CORE / Xcel Energy
CITY / COUNTY	Parker / Douglas

2022 DEMOGRAPHICS

Radius	Population	Income	Home Value
2 Mile	25,425	\$111,296	\$374,178
5 Mile	198,532	\$138,488	\$464,479
10 Mile	693,580	\$125,384	\$452,508

PARKER MARKET SERVICE AREA

- Parker, CO consists of two zip codes (80134 & 80138) delivering **±107,434 Residents**.
- 80134 is the **2nd Most Populous Zip Code** in the State of Colorado out of 513 Zip Codes.

TRAFFIC COUNTS

Vehicles Per Day (VPD)

- Approx. 41,000 VPD at Parker Rd. & Valley Hi Dr.
- Approx. 50,000 VPD at Cottonwood Dr. & Parker Rd.
- Approx. 69,000 VPD along Parker Rd.

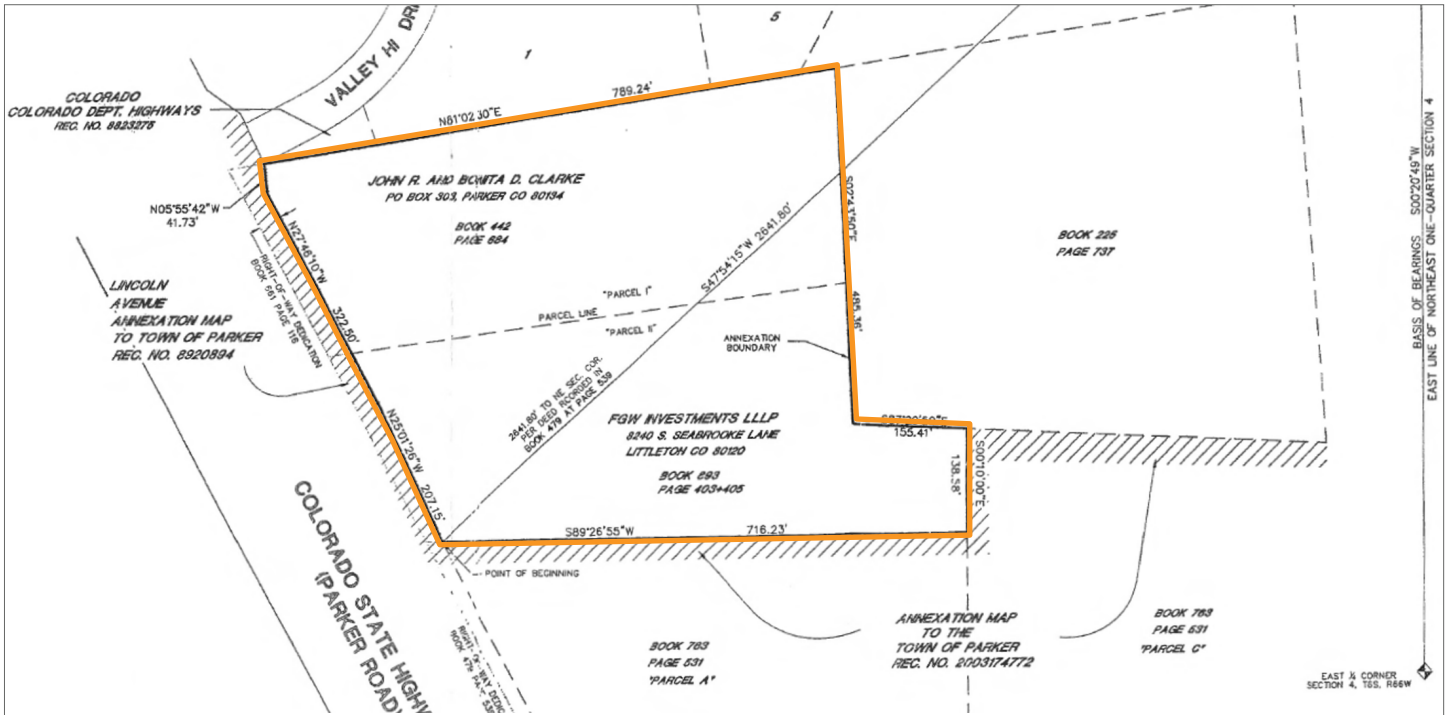
TREVEY COMMERCIAL

10510 Dransfeldt Rd, Suite 100
Parker, Colorado 80134
303-841-1400 | www.trevey.com

MITCH TREVEY

Managing Director
mitch@trevey.com
C: 303-619-7192

SITE SURVEY



TREVEY COMMERCIAL
10510 Dransfeldt Rd, Suite 100
Parker, Colorado 80134
303-841-1400 | www.trevey.com

MITCH TREVEY
Managing Director
mitch@trevey.com
C: 303-619-7192

[CLICK HERE TO DOWNLOAD CREC BROKERAGE DISCLOSURE](#)

Information contained herein, while not guaranteed, is from sources believed reliable. Price, terms and information subject to change. Please call to confirm current property status and accuracy of information contained herein.