

COMMERCIAL FOR SALE

CROSSROADS BUSINESS PARK LOT 6

767 CROSSROADS CIRCLE, ELIZABETH, CO 80107



TREVEY
COMMERCIAL
REAL ESTATE



PROPERTY FEATURES

- Join Napa, Dairy Queen, O'Reilly, Running Creek Dental, Bender Menders & Cleary Building Corp.
- Convenient Location on Highway 86 & C.R. 17 Near Downtown Elizabeth
- Build Ready Lot with all Utilities Adjacent to Property Lines
- Wide Range of Acceptable Uses Including Automotive Service, Car Wash, Liquor Store, Restaurant, Gym / Fitness Center, and Others
- Elbert County is Growing - More Details Here: [Comprehensive Overview](#)

Follow the links below for full zoning detail:



- [ELBERT COUNTY ZONING REGULATIONS](#)
- [ECONOMIC DEVELOPMENT ZONE \(EDZ\) OVERLAY](#)

PROPERTY DETAILS

LOT 6	0.65 AC (28,314 SF)
PRICE	\$275,000 (\$9.71 / SF)
ZONING	Retail / Commercial
WATER / SAN	Elizabeth / Elizabeth
GAS / ELECTRIC	Black Hills / CORE
CITY / COUNTY	Elizabeth / Elbert

TREVEY COMMERCIAL
10510 Dransfeldt Rd, Suite 100
Parker, Colorado 80134
303-841-1400 | www.trevey.com

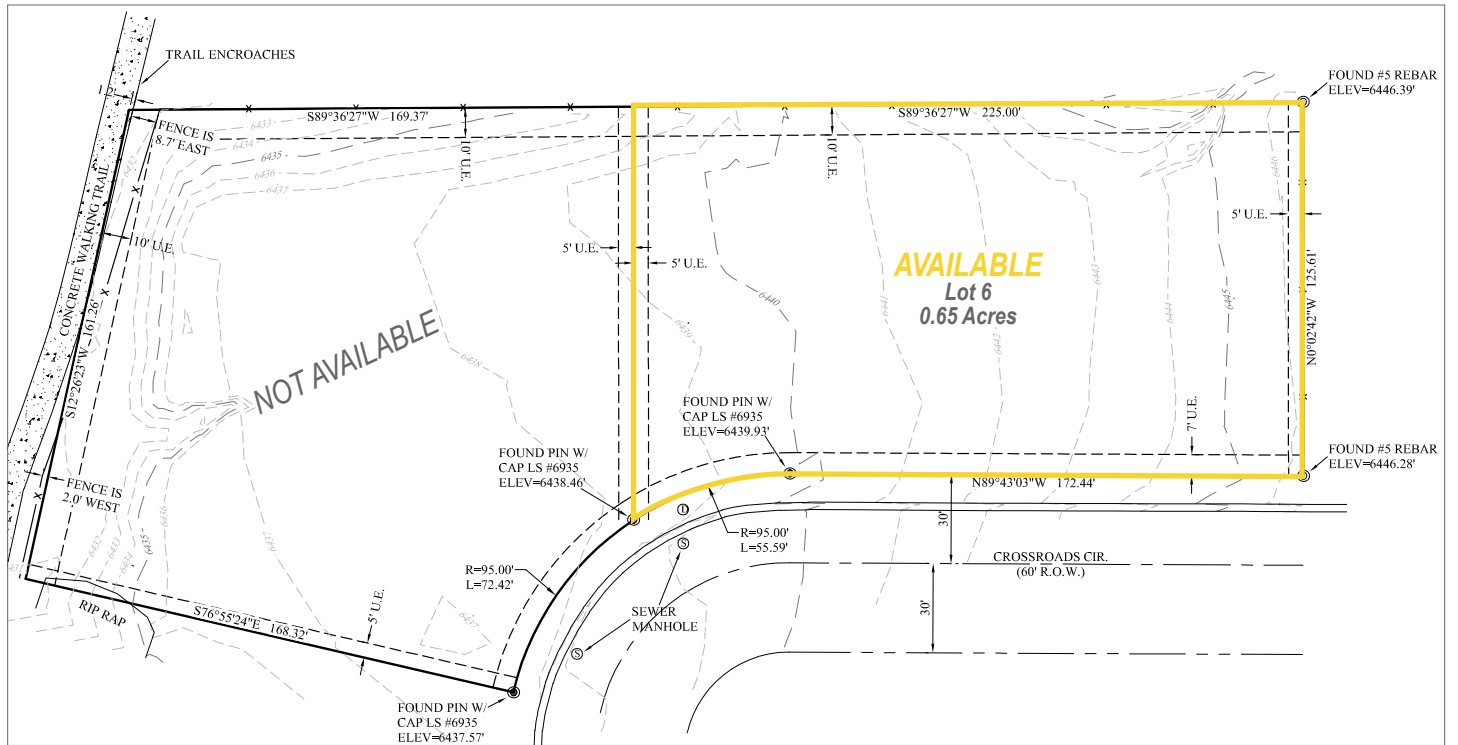
NICK BEACH
V.P. Sales & Leasing
nbeach@trevey.com
C: 719-237-0880

HEATH HONBARRIER
V.P. Sales & Leasing
heath@trevey.com
C: 720-252-0144

SITE AERIAL



SITE SURVEY



TREVEY COMMERCIAL
 10510 Dransfeldt Rd, Suite 100
 Parker, Colorado 80134
 303-841-1400 | www.trevey.com

NICK BEACH
 V.P. Sales & Leasing
nbeach@trevey.com
 C: 719-237-0880

HEATH HONBARRIER
 V.P. Sales & Leasing
heath@trevey.com
 C: 720-252-0144

[CLICK HERE TO DOWNLOAD CREC BROKERAGE DISCLOSURE](#)

Information contained herein, while not guaranteed, is from sources believed reliable. Price, terms and information subject to change. Please call to confirm current property status and accuracy of information contained herein.