

PRIME RETAIL FOR SUBLEASE PARKER CROSSROADS

10841 S. CROSSROADS DRIVE, PARKER, CO 80134



SUBLEASE OPPORTUNITY!

AVAILABLE



PROPERTY FEATURES

- Available Immediately for Sublease (*Expires 5/31/2025*)
- Open Layout for Retail
- 5-Year Minimum Lease Term
- Active Center with Direct Parker Rd. Frontage
- EV Charging Station on site with Ample Parking
- Join Other Crossroads Tenants Including: A+ Driving School, Cosmo Prof, StretchLab, Air Academy Federal Credit Union, Parker Optical, and More
- Excellent Access & Visibility at Parker Rd. & Mainstreet
- 7 Minutes to E-470, 15 Minutes to I-25, and 30 Minutes to Downtown Denver

PROPERTY DETAILS

AVAILABLE	Unit 2: ±960 SF
LEASE RATE	\$27.00 / SF NNN (<i>Base Rent</i>)
NNN / CAM RATE	\$9.00 / SF (<i>Estimated</i>)
MONTHLY RENT	\$2,880.00 / Month
PARKING	7.5 / 1000
BUILDING SIZE	52,560 SF
Y.O.C.	1984
CITY / COUNTY	Parker / Douglas

DEMOGRAPHICS

Radius	Population	Income	Home Value
2 Mile	41,261	\$138,329	\$465,521
5 Mile	128,241	\$142,333	\$471,659
10 Mile	513,325	\$143,533	\$486,487

**2028 Projected Population*

PARKER MARKET SERVICE AREA

- Parker, CO consists of two zip codes (80134 & 80138) delivering ±107,434 Residents.
- 80134 is the 2nd Most Populous Zip Code in the State of Colorado out of 513 Zip Codes.

TRAFFIC COUNTS

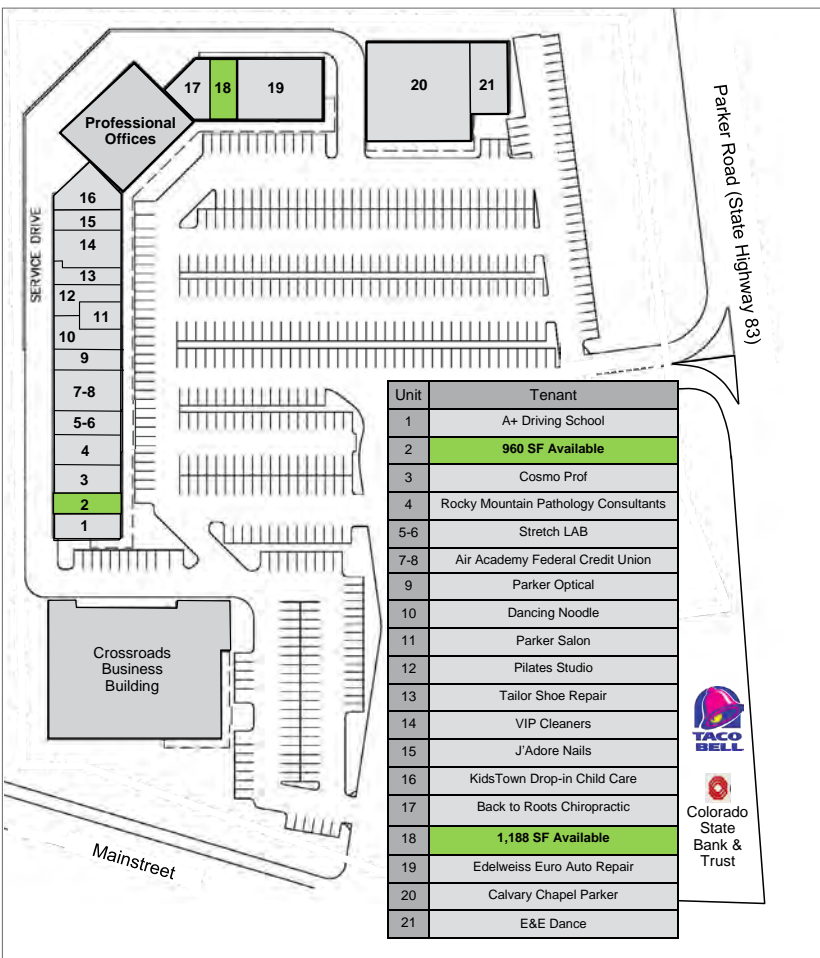
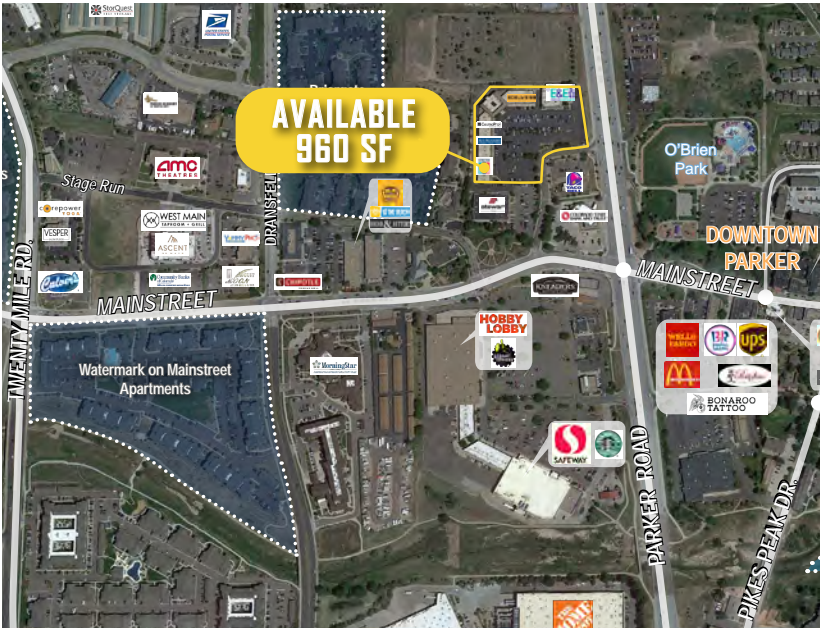
Vehicles Per Day (VPD)
Approx. 18,000 VPD at Crossroads Dr. & Mainstreet
Approx. 53,000 VPD at Parker Rd. & Mainstreet
Approx. 69,000 VPD along Parker Rd.

TREVEY COMMERCIAL
10510 Dransfeldt Rd, Suite 100
Parker, Colorado 80134
303-841-1400 | www.trevey.com

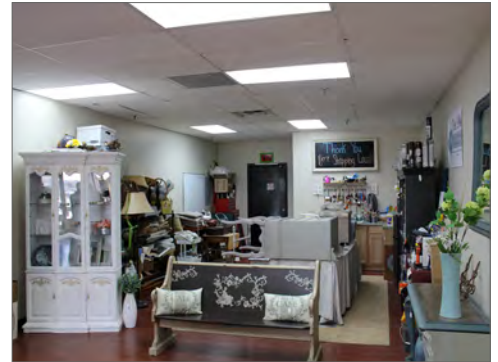
HEATH HONBARRIER
V.P. Sales & Leasing
heath@trevey.com
C: 720-252-0144

MITCH TREVEY
Managing Director
mitch@trevey.com
C: 303-619-7192

SITE DETAIL



INTERIOR PHOTOS



TREVEY COMMERCIAL
 10510 Dransfeldt Rd, Suite 100
 Parker, Colorado 80134
 303-841-1400 | www.trevey.com

HEATH HONBARRIER
 V.P. Sales & Leasing
heath@trevey.com
 C: 720-252-0144

MITCH TREVEY
 Managing Director
mitch@trevey.com
 C: 303-619-7192

[CLICK HERE TO DOWNLOAD CREC BROKERAGE DISCLOSURE](#)

Information contained herein, while not guaranteed, is from sources believed reliable. Price, terms and information subject to change. Please call to confirm current property status and accuracy of information contained herein.