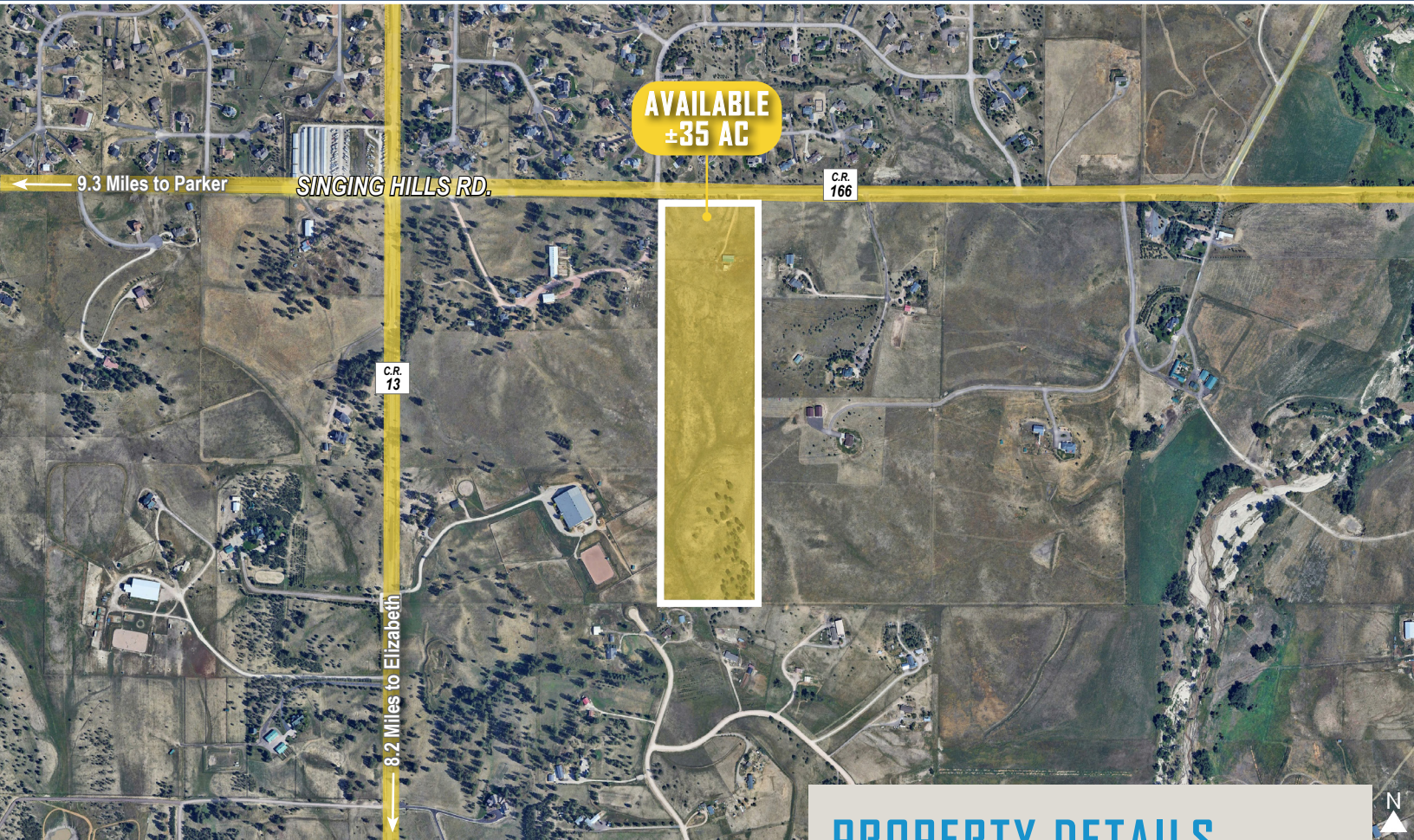


DEVELOPMENT LAND FOR SALE
3078 COUNTY ROAD 166
3078 COUNTY ROAD 166, ELIZABETH, CO 80107



AVAILABLE
±35 AC

PROPERTY FEATURES

- Prime 35.00 AC Development Site
- Site Planned for RV & Boat Storage
- Wide Range of Uses Allowed per EDZ (*See Link Below*)
- Ideal Custom Home Lot with Stunning Mountain Views
- Direct Access off County Road 166
- Less than 10 miles from the growing, amenity-rich towns of Parker and Elizabeth, Colorado

Follow the links below for full zoning detail:

- ELBERT COUNTY COLORADO**
- [ELBERT COUNTY ZONING REGULATIONS](#)
 - [ECONOMIC DEVELOPMENT ZONE \(EDZ\) OVERLAY](#)

PROPERTY DETAILS

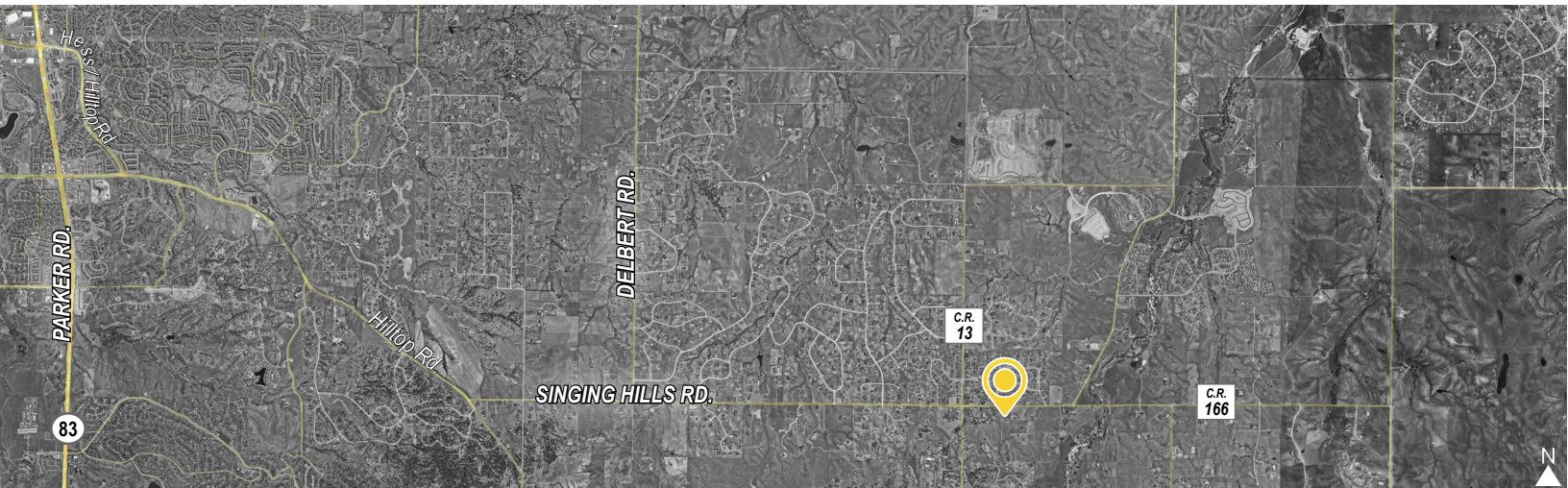
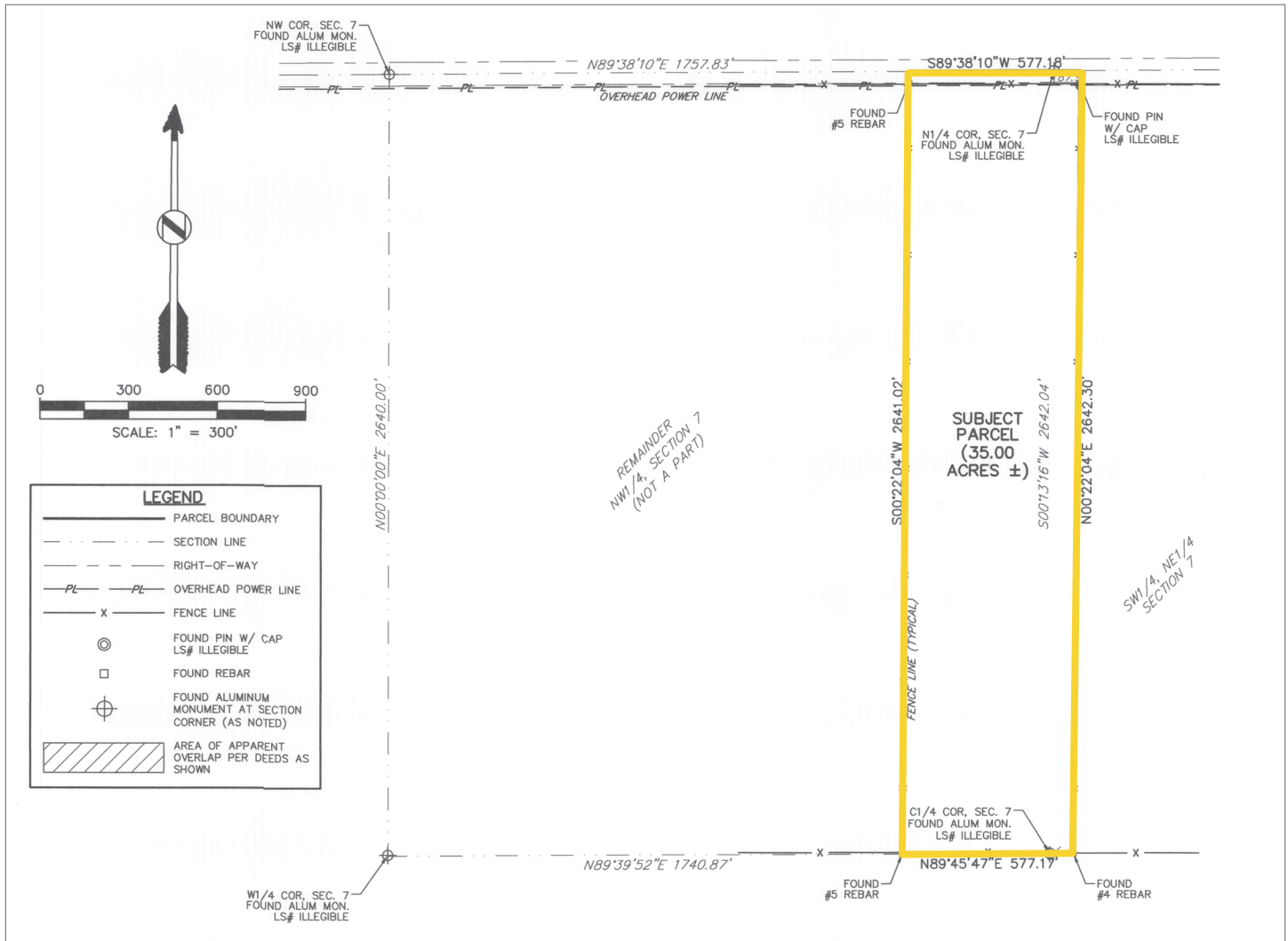
LOT SIZE	±35.00 Acres m/l
PRICE	\$800,000.00
TAXES	\$7,795.44 (2024)
ZONING	Agricultural with EDZ Overlay
USE	Custom Home Site / Storage / Commercial
WATER / SANITATION	Well / Septic
GAS / ELECTRIC	Blackhills Energy / CORE
CITY / COUNTY	Elizabeth / Elbert
FRONTAGE	560' on Singing Hills (CR #166)

TREVEY COMMERCIAL
10510 Dransfeldt Rd, Suite 100
Parker, Colorado 80134
303-841-1400 | www.trevey.com

NICK BEACH
V.P. Sales & Leasing
nbeach@trevey.com
C: 719-237-0880

MITCH TREVEY
Managing Director
mitch@trevey.com
C: 303-619-7192

LAND SURVEY



TREVEY COMMERCIAL
10510 Dransfeldt Rd, Suite 100
Parker, Colorado 80134
303-841-1400 | www.trevey.com

NICK BEACH
V.P. Sales & Leasing
nbeach@trevey.com
C: 719-237-0880

MITCH TREVEY
Managing Director
mitch@trevey.com
C: 303-619-7192

[CLICK HERE TO DOWNLOAD CREC BROKERAGE DISCLOSURE](#)

Information contained herein, while not guaranteed, is from sources believed reliable. Price, terms and information subject to change. Please call to confirm current property status and accuracy of information contained herein.