

RETAIL FOR SUBLEASE PARKER PLAZA

10461 S. PARKER RD., PARKER, CO 80134



STATE-OF-THE-ART A/V SETUP



PROPERTY FEATURES

- 5,000 SF Available Immediately for Sublease
- Wide Range of Uses Permitted (*Assembly, Commercial, Office, Retail and Storage*)
- Solid Tenant Mix
- Prime Multi-Tenant Retail Building Totaling 34,110 SF
- Building Signage Available
- **Not Allowed:** Massage, Vape, Salon or Aesthetics Uses
- 5 Minutes to E-470, 15 Minutes to I-25, and 30 Minutes to Downtown Denver

PROPERTY DETAILS

AVAILABLE	Suite 10461: 5,000 SF \$5,625.00 / Month Rent \$4,033.33 / Month CAM \$9,658.33 / Month Total
SUBLEASE RATE	\$13.50 / SF NNN
CAM / NNN	\$9.68 / SF (Estimate)
PARKING	3.9 / 1,000
Y.O.C.	1981
CITY / COUNTY	Parker / Douglas

DEMOGRAPHICS

Radius	Population	Income	Home Value
2 Mile	41,597	\$130,420	\$452,768
5 Mile	151,146	\$144,092	\$475,721
10 Mile	547,089	\$146,260	\$481,044

PARKER MARKET SERVICE AREA

- Parker, CO consists of two zip codes (80134 & 80138) delivering **±107,434 Residents**.
- 80134 is the **2nd Most Populous Zip Code** in the State of Colorado out of 513 Zip Codes.

TRAFFIC COUNTS

Vehicles Per Day (VPD)
Approx. 45,000 VPD at Plaza Dr. & Parker Rd.
Approx. 49,000 VPD at Parker Rd. & Plaza Dr.
Approx. 60,000 VPD at Lincoln Ave. & Parker Rd.

TREVEY COMMERCIAL

10510 Dransfeldt Rd, Suite 100
Parker, Colorado 80134
303-841-1400 | www.trevey.com

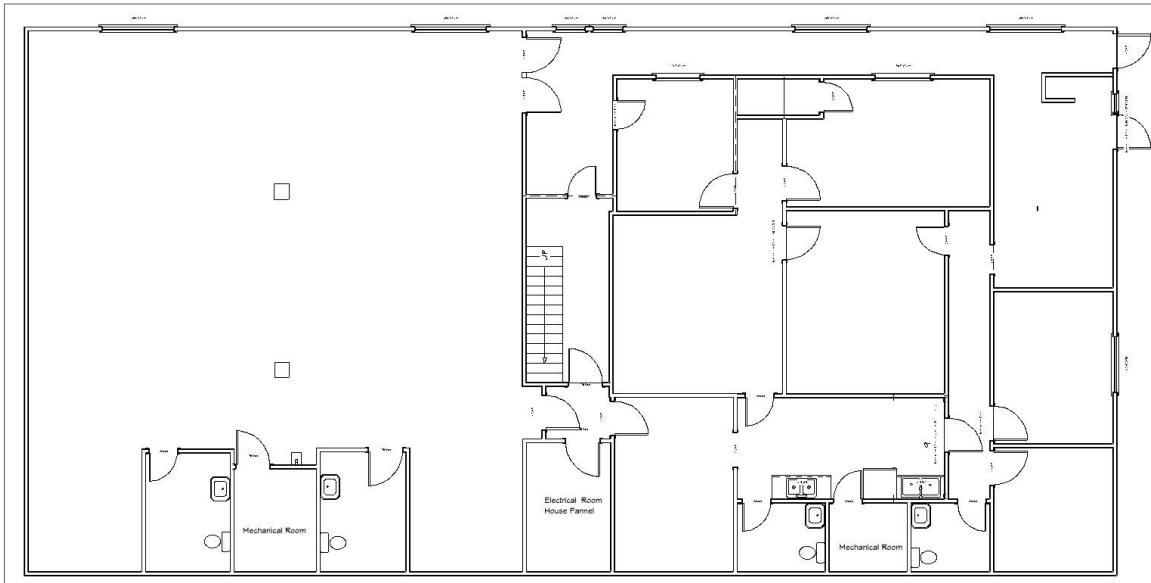
DAVID MARULLI

Capital Markets
david@trevey.com
C: 720-298-2840

TOMMY DAHER

Associate Broker
tommy@trevey.com
C: 303-916-8231

LAYOUT & FEATURES



ADDITIONAL FEATURES:

- Professional Grade / Full-Scale Audio / Visual Set-up
- Upgraded Lighting System
- Designed for Live Streaming with 3 Camera Hook-ups
- All Audio / Visual Equipment Potentially for Sale
- New Carpet, Flooring & Paint Throughout
- Newly Refinished Restrooms
- Newly Painted / Replaced Doors
- New Ceiling Tiles in Sanctuary



TREVEY COMMERCIAL
 10510 Dransfeldt Rd, Suite 100
 Parker, Colorado 80134
 303-841-1400 | www.trevey.com

DAVID MARULLI
 Capital Markets
 david@trevey.com
 C: 720-298-2840

TOMMY DAHER
 Associate Broker
 tommy@trevey.com
 C: 303-916-8231

[CLICK HERE TO DOWNLOAD CREC BROKERAGE DISCLOSURE](#)

Information contained herein, while not guaranteed, is from sources believed reliable. Price, terms and information subject to change. Please call to confirm current property status and accuracy of information contained herein.