

DEVELOPMENT LAND FOR SALE

GOLD CREEK PARK COMMERCIAL

TBD COUNTY ROAD 13, ELIZABETH, CO 80107

TREVEY
COMMERCIAL



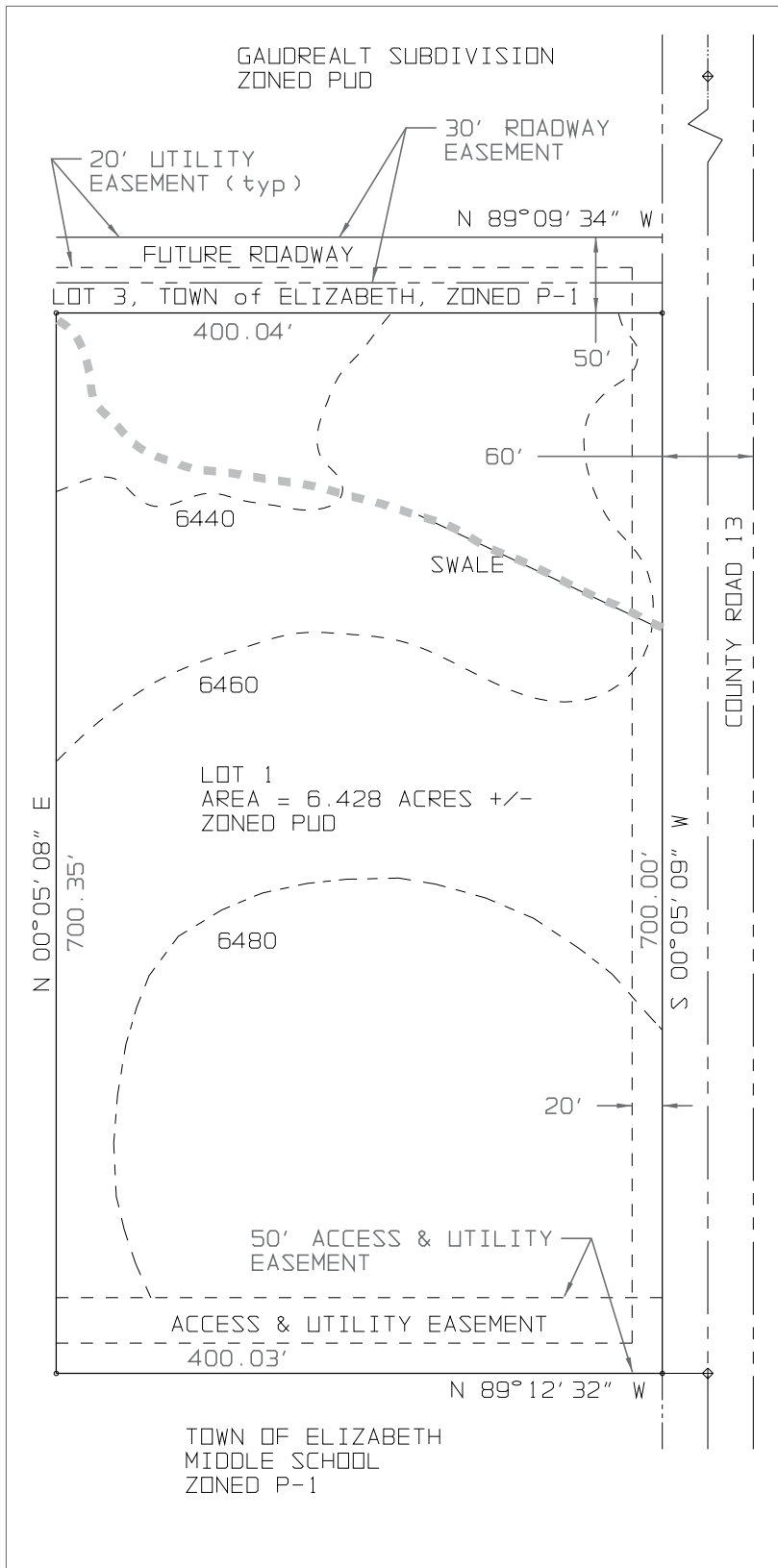
PROPERTY FEATURES

- Mixed-Use Development Land for Sale
- Adjacent to Elizabeth Middle School & Elizabeth High School
- Highly Desirable Zoning Allowing for Wide Range of Uses
- Link to: [Gold Creek Development Plan & Design Guide](#)
- Excellent Visibility & Access on County Road 13
- All Utilities Adjacent to Property in Roadway & Easements
- Growing Traffic Counts on County Road 13
- Great Location for Retail, Flex, Light Industrial, Office & Mixed-Use
- For Additional Market Information Follow this Link:
[Comprehensive Overview: Growth in Elbert County](#)

PROPERTY DETAILS

LOT SIZE	±6.428 Acres m/l
PRICE	\$2,240,000 (\$8.00 / SF)
TAXES	\$6,191.24 (2025)
ZONING	PUD - Planned Urban Development
USE	Commercial / Mixed-Use
WATER / SANITATION	Town of Elizabeth
GAS / ELECTRIC	Blackhills Energy / CORE
CITY / COUNTY	Elizabeth / Elbert
FRONTAGE	700' on County Road 13

SITE DETAIL



TREVEY
COMMERCIAL

www.trevey.com
303-841-1400

HEATH HONBARRIER
V.P. Sales & Leasing
heath@trevey.com
C: 720-252-0144

NICK BEACH
V.P. Sales & Leasing
nbeach@trevey.com
C: 719-237-0880

MITCH TREVEY
Managing Director
mitch@trevey.com
C: 303-619-7192

BROKERAGE DISCLOSURE

Information contained herein has been obtained from sources believed reliable; however, no guarantee, warranty, or representation is made as to its accuracy. All information, including price and terms, is subject to change without notice. Please verify all information prior to reliance.