

DEVELOPMENT LAND FOR SALE

35568 COUNTY ROAD 13

35568 COUNTY ROAD 13, ELIZABETH, CO 80107

TREVEY
COMMERCIAL



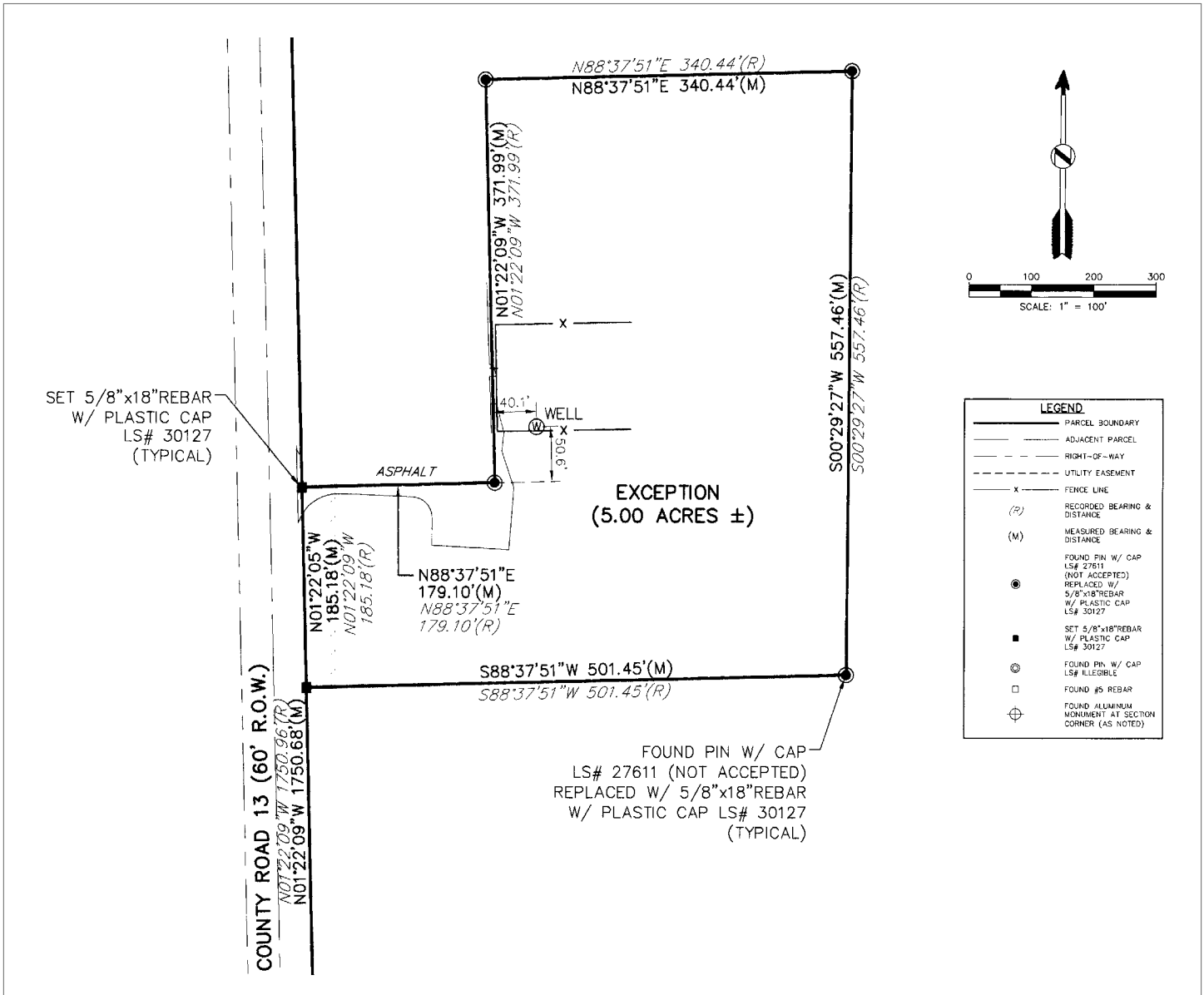
PROPERTY FEATURES

- Development Land for Sale with Existing 4,200 SF Home
- Currently Zoned RA-1
- Centrally Located East of Elizabeth in Fast Growing Elbert County Corridor
- Strong Frontage and Growing Traffic Counts Along County Road 13
- Excellent Opportunity for Residential, Investment or Future Development Potential
- Convenient Access to Highway 86, Elizabeth, Parker & Surrounding Communities
- For Additional Market Information Follow this Link:
[Comprehensive Overview: Growth in Elbert County](#)

PROPERTY DETAILS

LOT SIZE	±5.00 Acres m/l
PRICE	\$1,300,000 (\$5.97 / SF)
TAXES	\$3,281.52 (2025)
ZONING	RA-1
USE	Residential
WATER / SANITATION	Well / Septic
GAS / ELECTRIC	Propane / CORE
CITY / COUNTY	Elizabeth / Elbert
FRONTAGE	167' on County Road 13

SITE SURVEY



PROPERTY IMAGES



TREVEY
COMMERCIAL

www.trevey.com
303-841-1400

HEATH HONBARRIER
V.P. Sales & Leasing
heath@trevey.com
C: 720-252-0144

TOMMY DAHER
V.P. Sales & Leasing
tommy@trevey.com
C: 303-916-8231

BROKERAGE DISCLOSURE

Information contained herein has been obtained from sources believed reliable; however, no guarantee, warranty, or representation is made as to its accuracy. All information, including price and terms, is subject to change without notice. Please verify all information prior to reliance.